

model CITIZEN MF 900-45 WHE 1S

Dimensions (mm)

- combustion opening WxH 902 x 452
- external WxDxH 1023 x 469 x 874
- fresh air 1 x Ø100
- diam. flue Ø180

Technical Data

- capacity: 12.8 kW
- efficiency capacity: 78%
- CO (volume with 13%O₂): 0.08%
- dust (volume with 13%O₂): 28mg/Nm³
- min. insulation thickness (mm)*: NC-NC-95-53
- weight: 200kg

Specifications

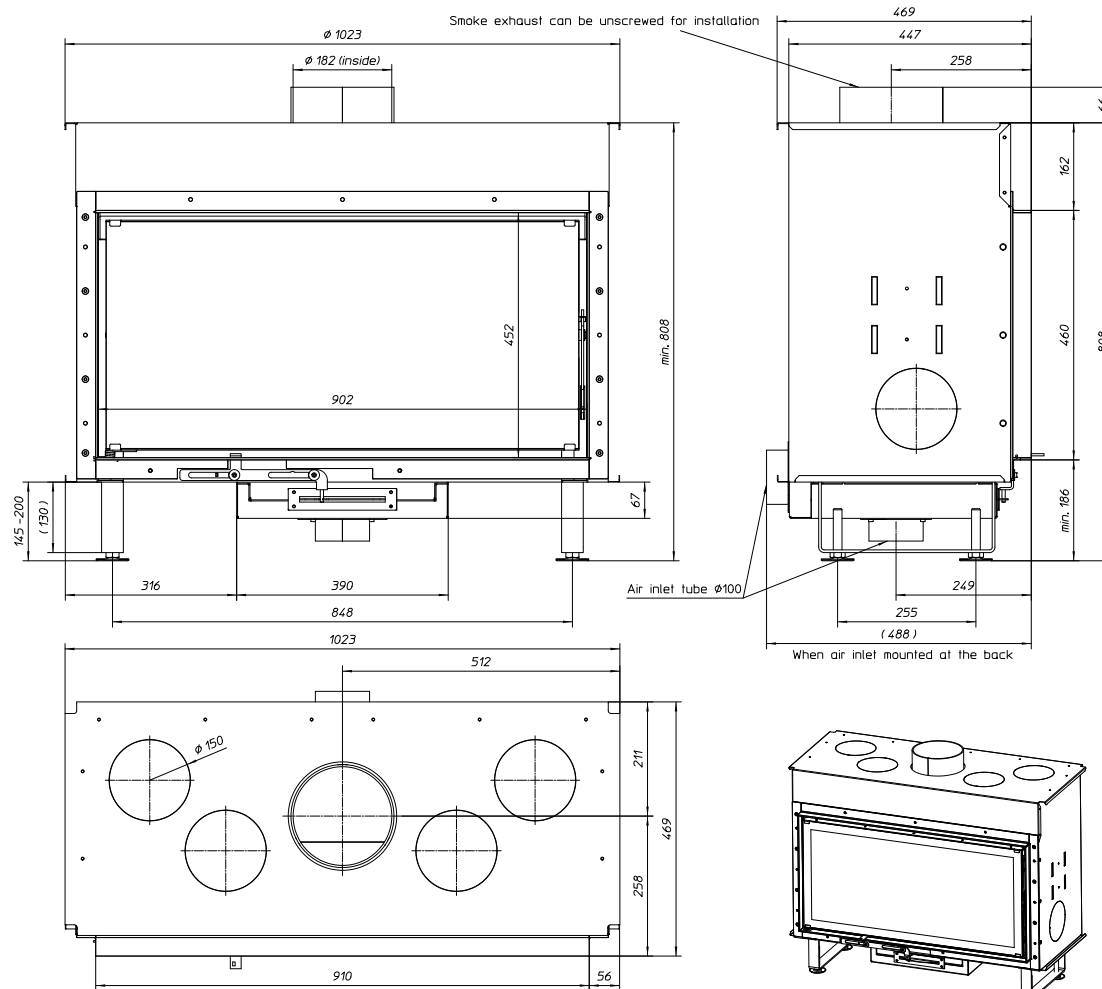
- inside: finishing heat-resistant black paint
- vermiculite insulation plates
- convection jacket in galvanized steel
- side-hinged door in heat-resistant glass
- interior finish: ORIGINAL (ribbed cast iron)

Options

- promat insulation kit

* minimum insulation thickness starting from inflammable materials:

THICKNESS TOPSIDE - THICKNESS BOTTOMSIDE -
THICKNESS REARSIDE - THICKNESS SIDE



scale 1:20

www.metalfire.eu

EN 13229 CE

General dimensional tolerances up to 6mm
Metalfire preserves the right to modify specifications without previous notice