

# metalfire




| architectural fireplaces |

**model** UNIVERSAL MF 800-75 W 2S L

**Dimensions (mm)**

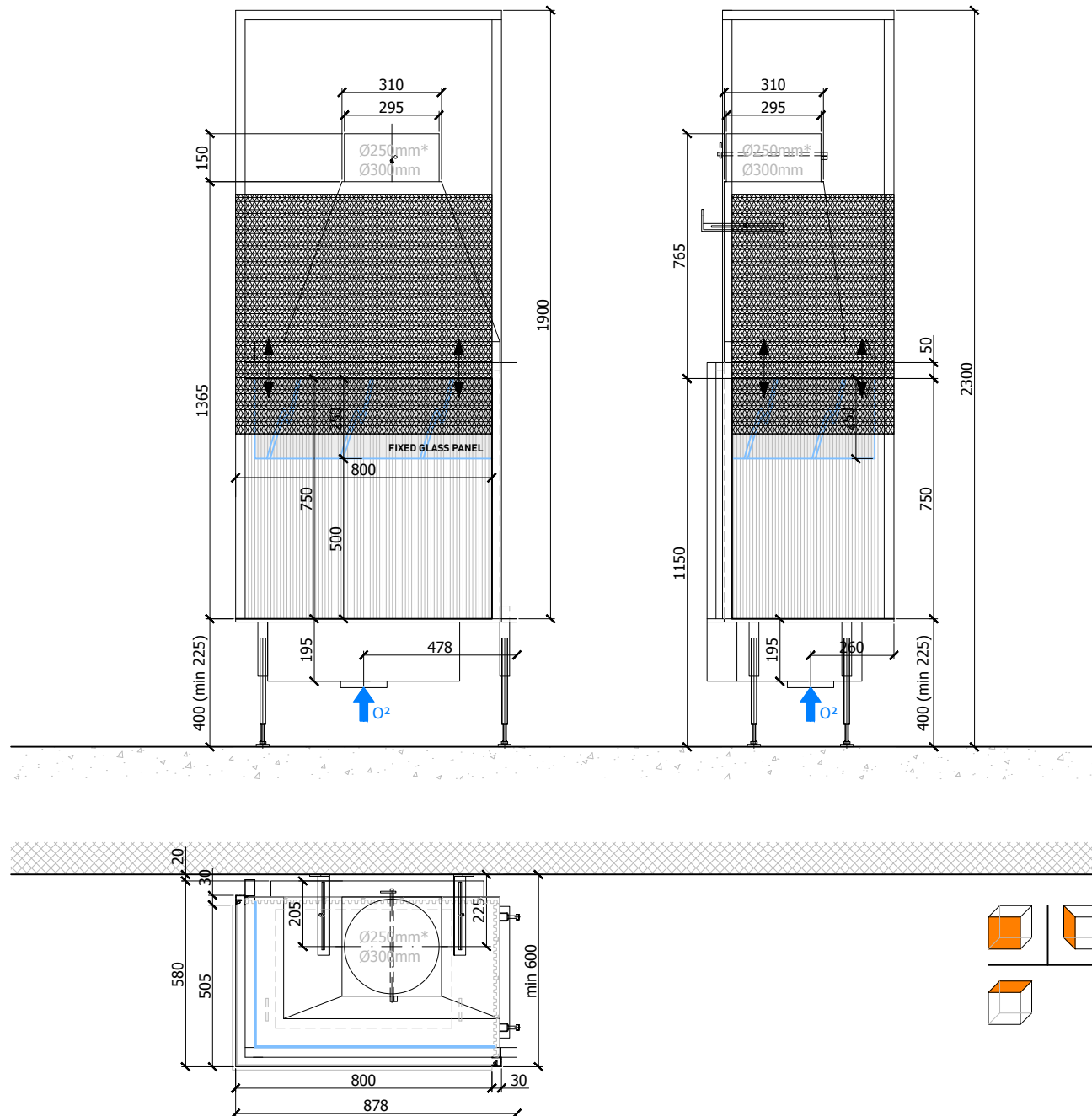
- combustion chamber WxDxH 800 x 505 x 750
- external WxDxH 878 x 580 x 2300
- stoke grate WxD 550 x 370
- fresh air 1 x Ø150

**Specifications**

- finishing: heat-resistant black paint
- lockable valve for fresh air and smoke gases
- \* heat-resistant glass panel height 250mm when valve = Ø250mm
- two-piece cast iron stoke grate 
- sliding door in metal wire mesh  (black H-R paint)
- back and side of combustion chamber: ribbed cast iron 

**Options**

- chimney fan RSV 14
- convection jacket (see options)



scale 1:20

[www.metalfire.eu](http://www.metalfire.eu)

General dimensional tolerances up to 6mm  
Metalfire preserves the right to modify specifications without previous notice